



Kem C. Gardner
POLICY INSTITUTE
THE UNIVERSITY OF UTAH

DAVID ECCLES SCHOOL OF BUSINESS

Weber County Demographic Insights

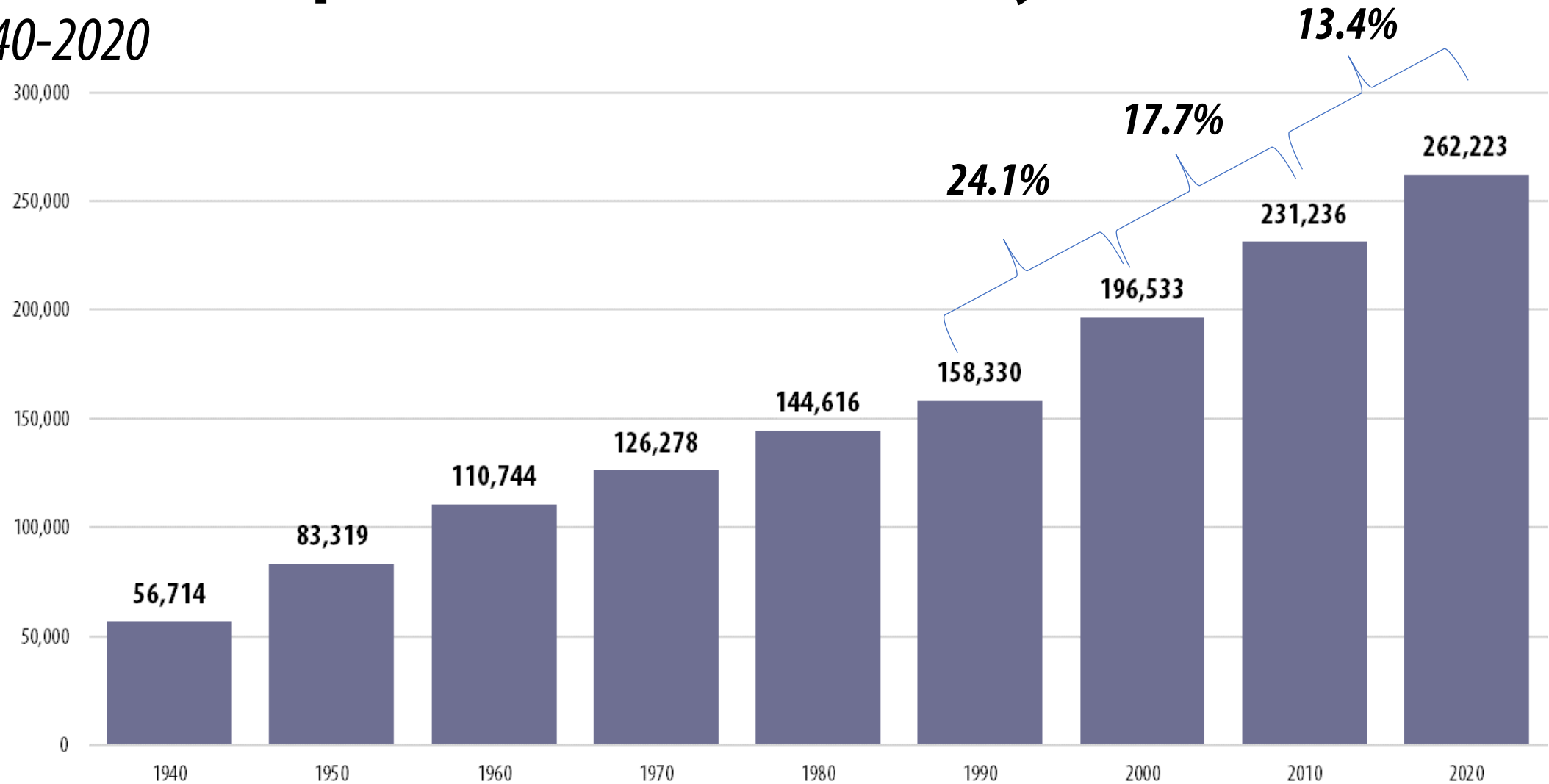
August 25, 2022

INFORMED DECISIONS™

Kem C. Gardner Policy Institute | 411 East South Temple Street, Salt Lake City, Utah 84111 | 801-585-5618 | gardner.utah.edu

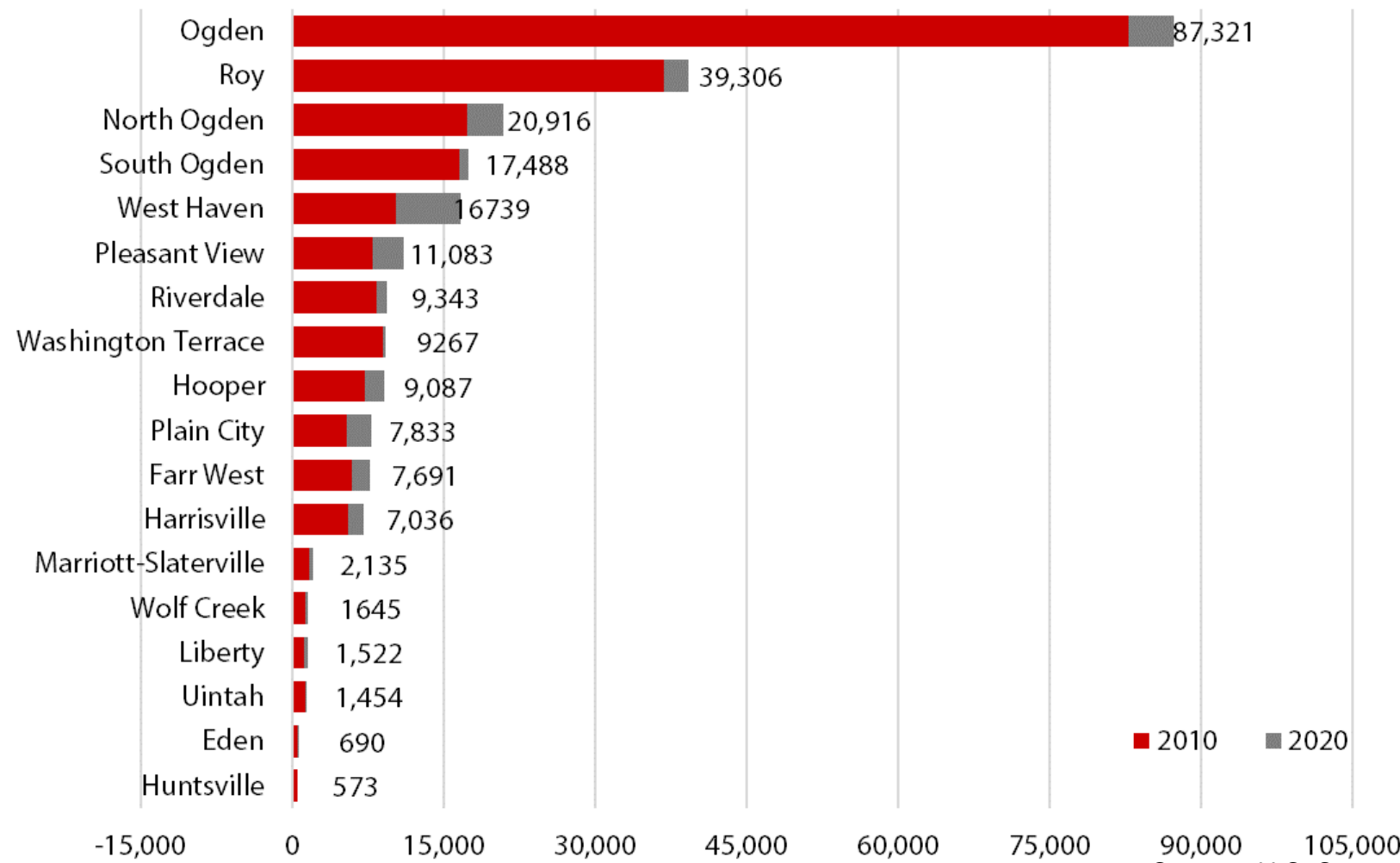
Growth of Population in Weber County

1940-2020



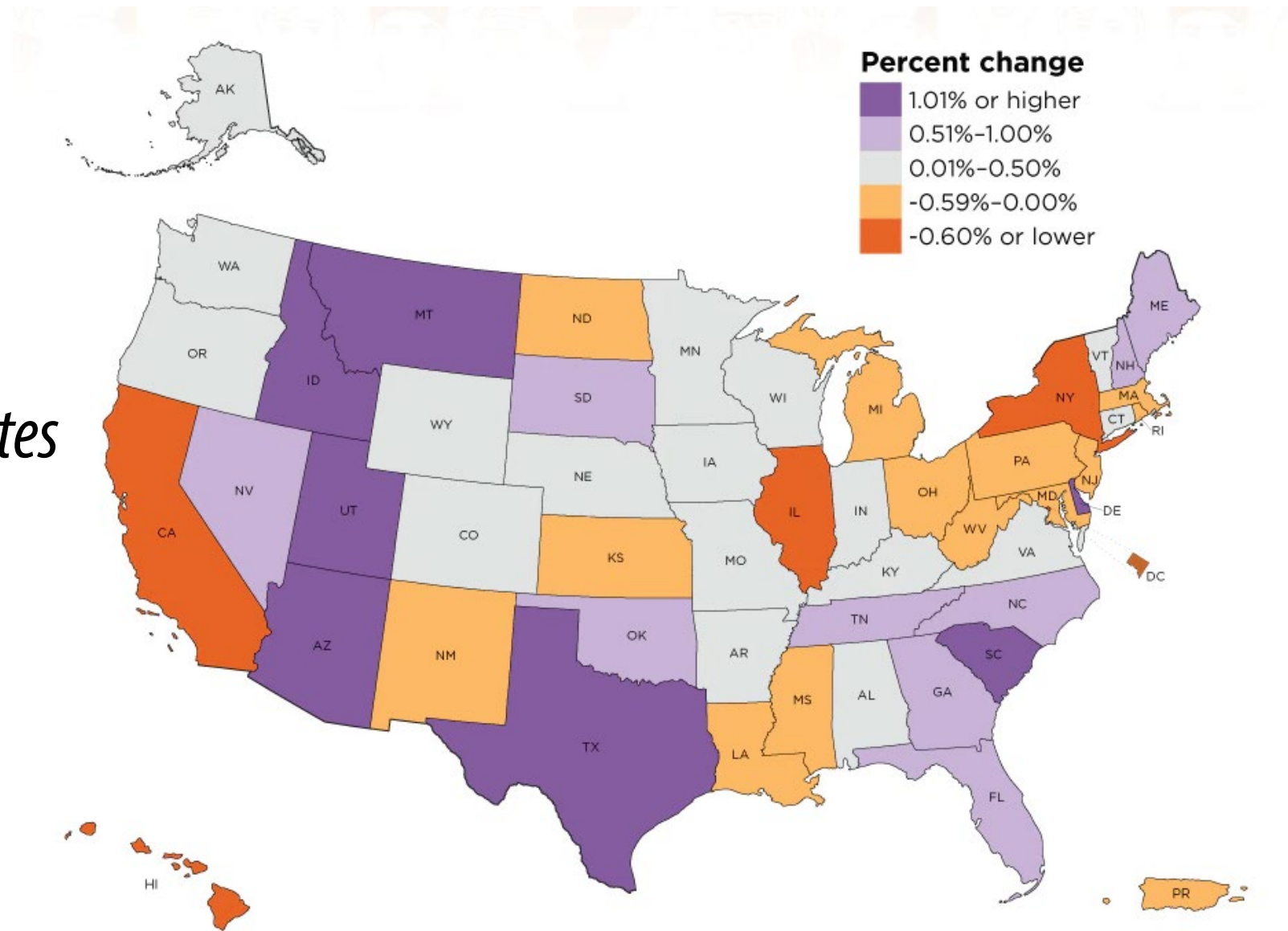
Source: U.S. Census Bureau, Decennial Census

Ogden added the most residents and West Haven grew the fastest between 2010 and 2020



Source: U.S. Census Bureau, Redistricting Data

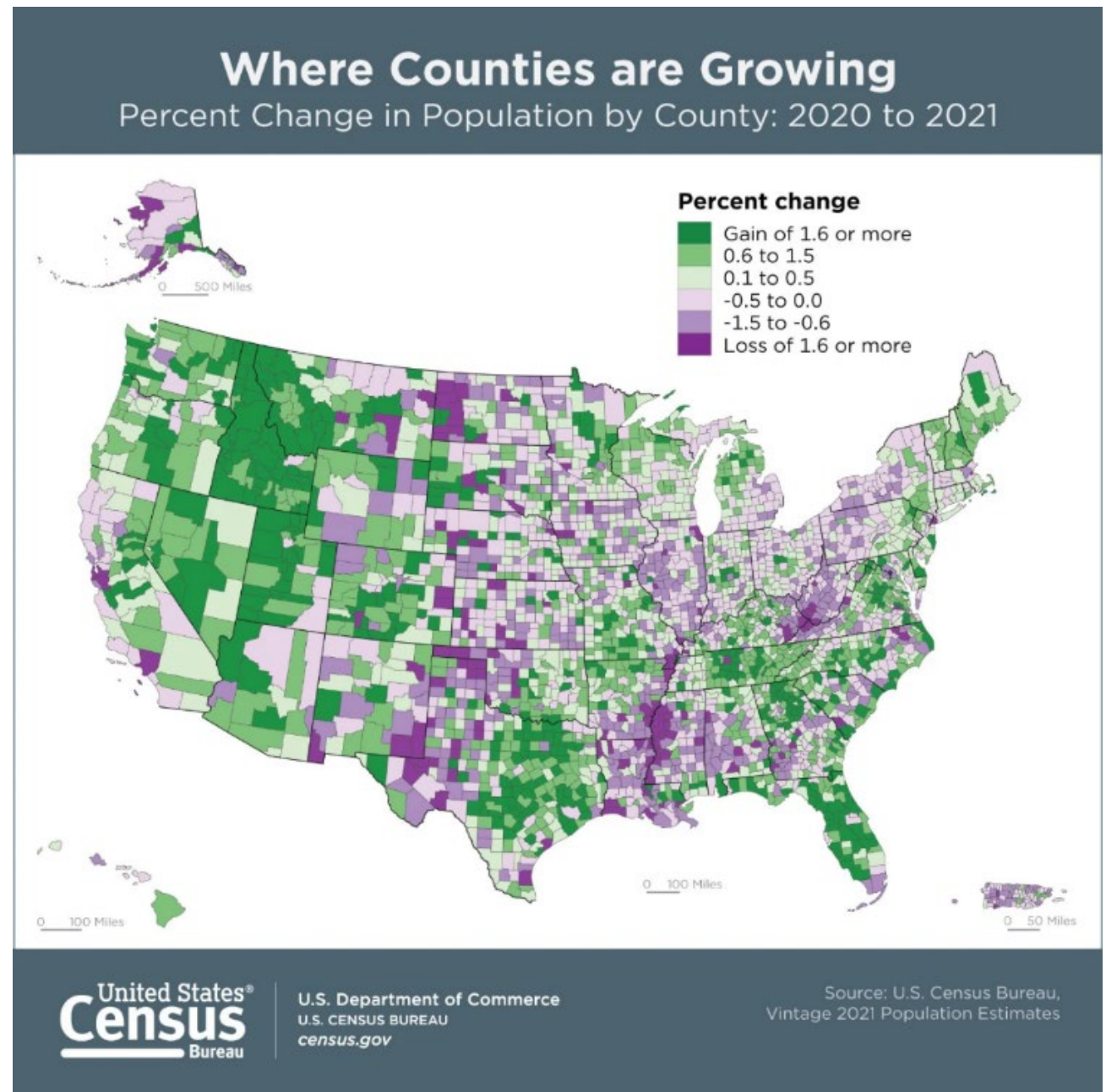
*Between 2020 and 2021,
“COVID-19, declining birth rates
and international migration
resulted in historically small
population gains”*



Source: U.S. Census Bureau

County-level population change varied between 2020 and 2021.

Weber County Population, 2021
267,066

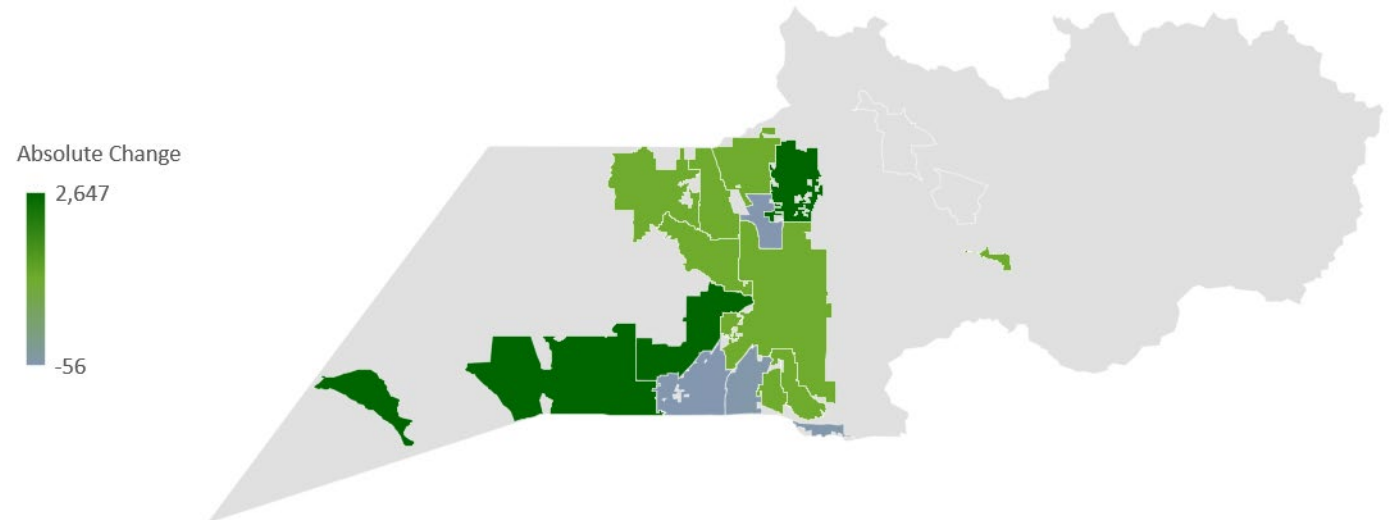


Between 2020 and 2021,

West Haven added the most new residents and grew fastest

Populations in North Ogden, Hooper, Plain City, Farr West, and Marriott-Slaterville all increased by more than 2%

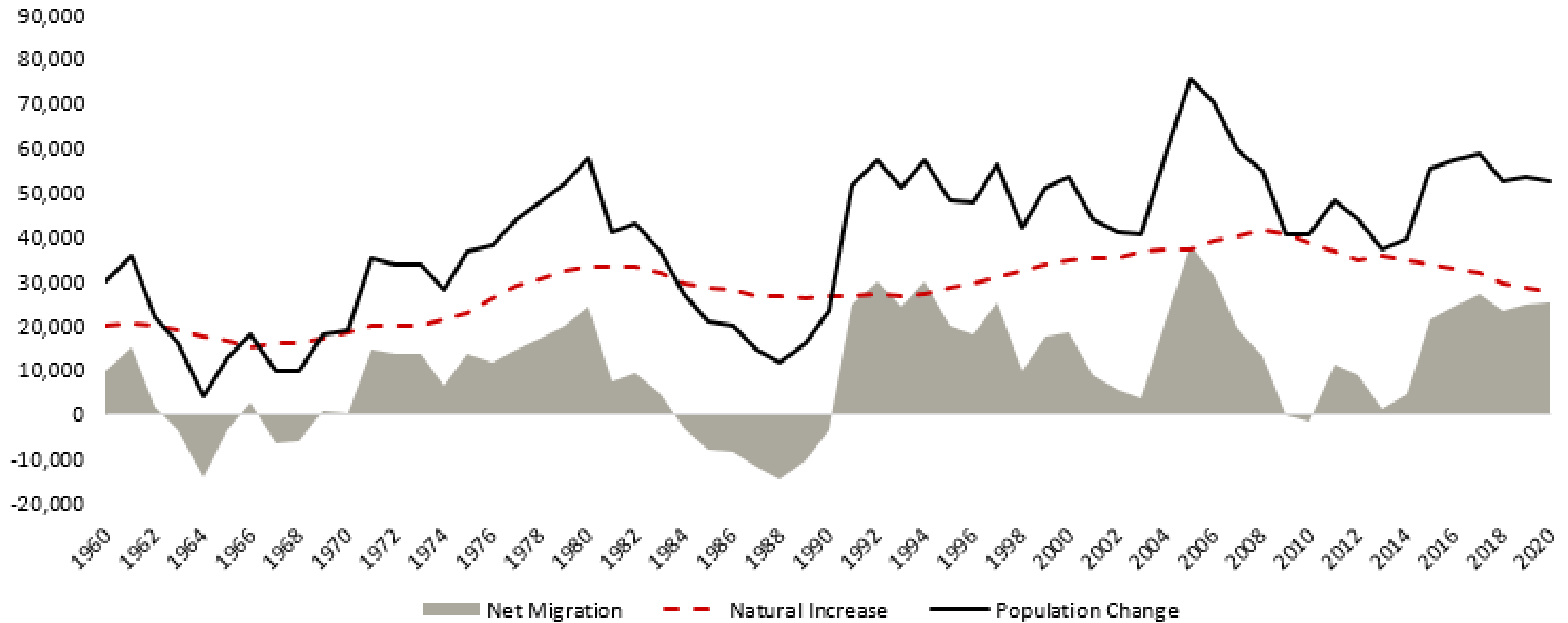
Roy, Harrisville, and Uintah are estimated to have lost population



Powered by Bing
© GeoNames, Microsoft, TomTom

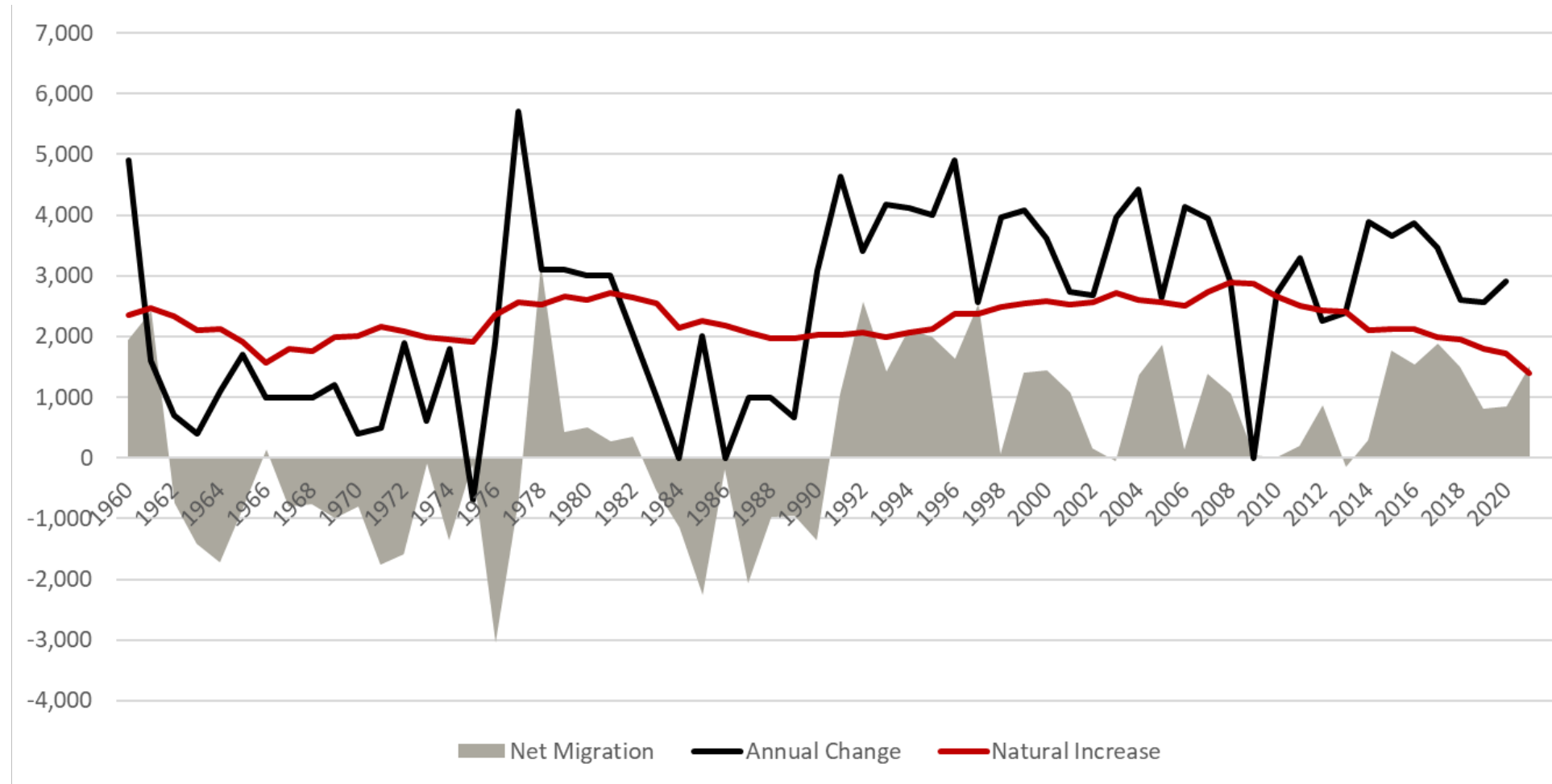
Source: U.S. Census Bureau, Population Division

Migration has become a more consistent component of change



Source: Utah Population Estimates Committee and Utah Population Committee

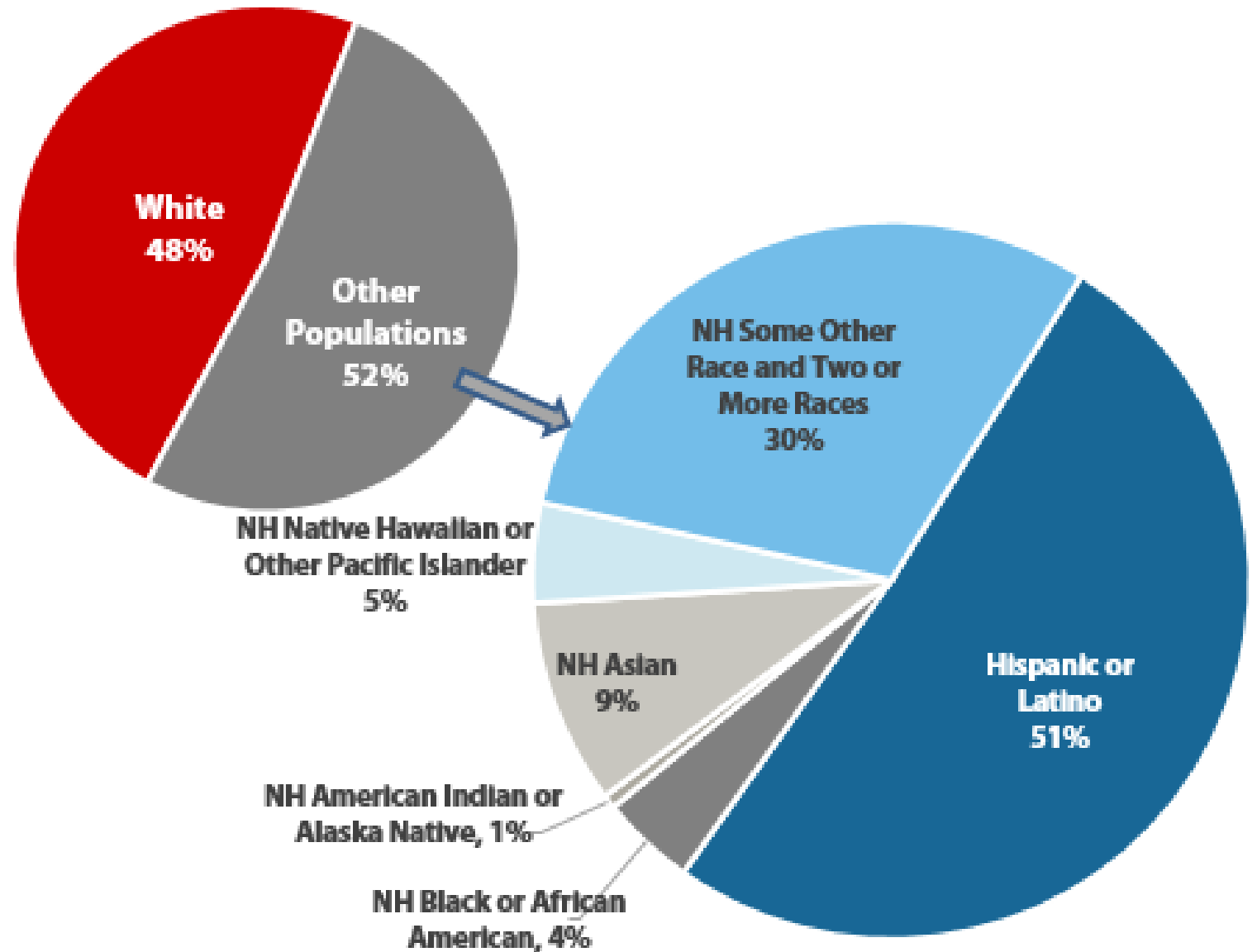
Since 1990, migration has driven around 23% of growth in Weber County



Source: Utah Population Estimates Committee

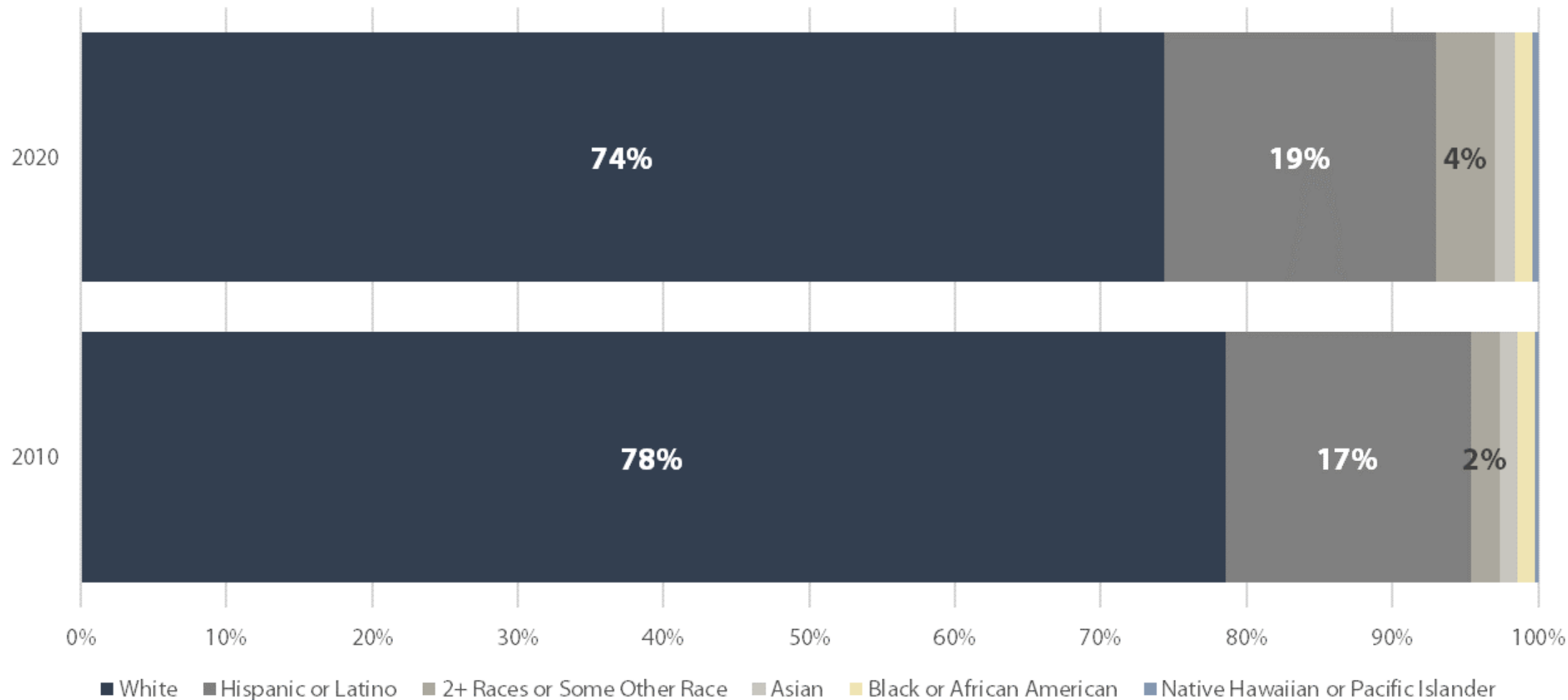
Racial and ethnic diversity in Utah has played a critical role in population growth this decade

Contributions to growth by racial and ethnic populations, 2010 to 2020



Source: U.S. Census Bureau, Redistricting Data Files (2010 and 2020)

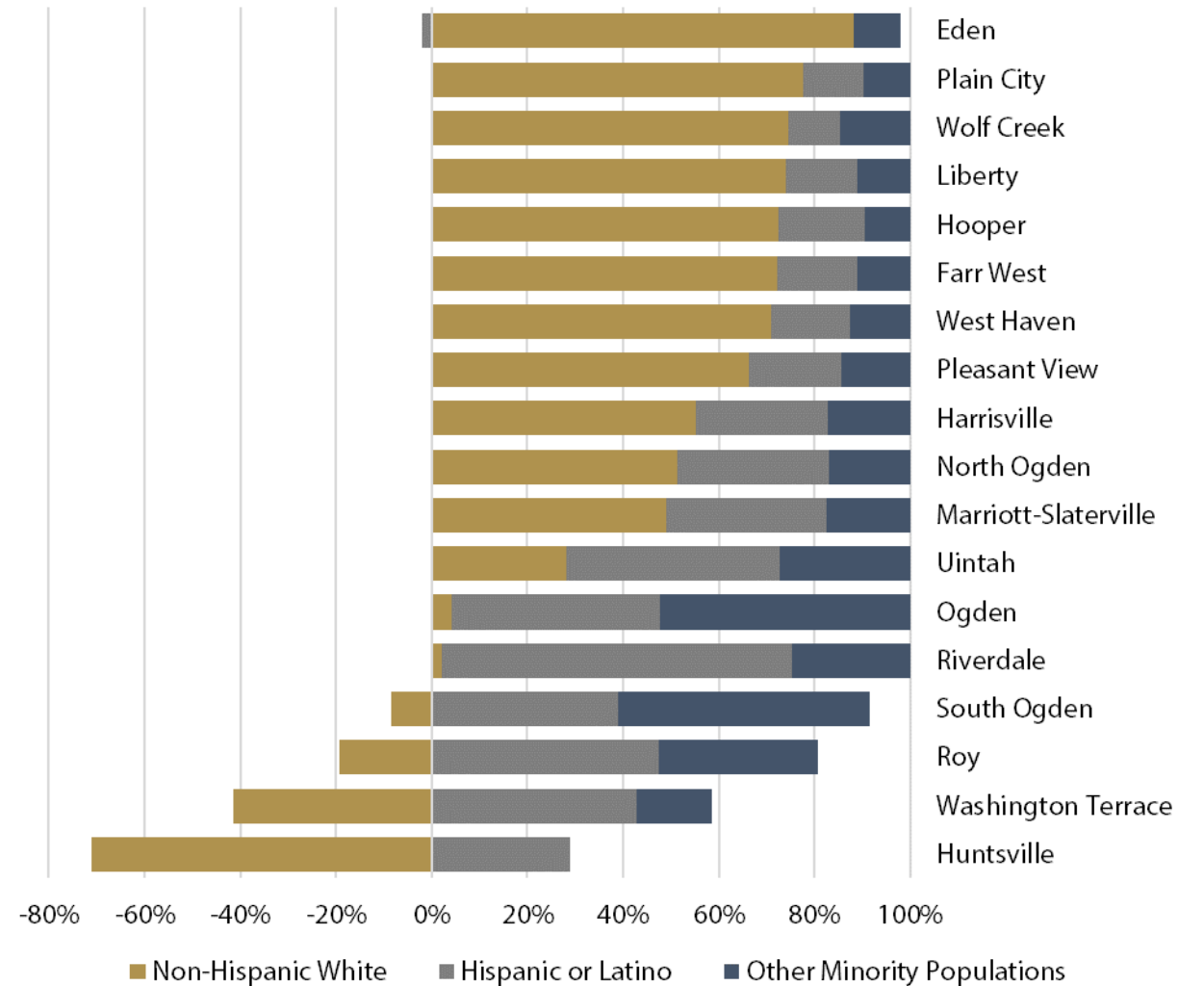
Racial and ethnic diversity increased in Weber County last decade



Source: U.S. Census Bureau, Redistricting Data Files (2010 and 2020)

Share of Population Change in Weber County Communities by Race and Ethnic groups, 2010-2020

Community-level change in racial or ethnic populations varies.

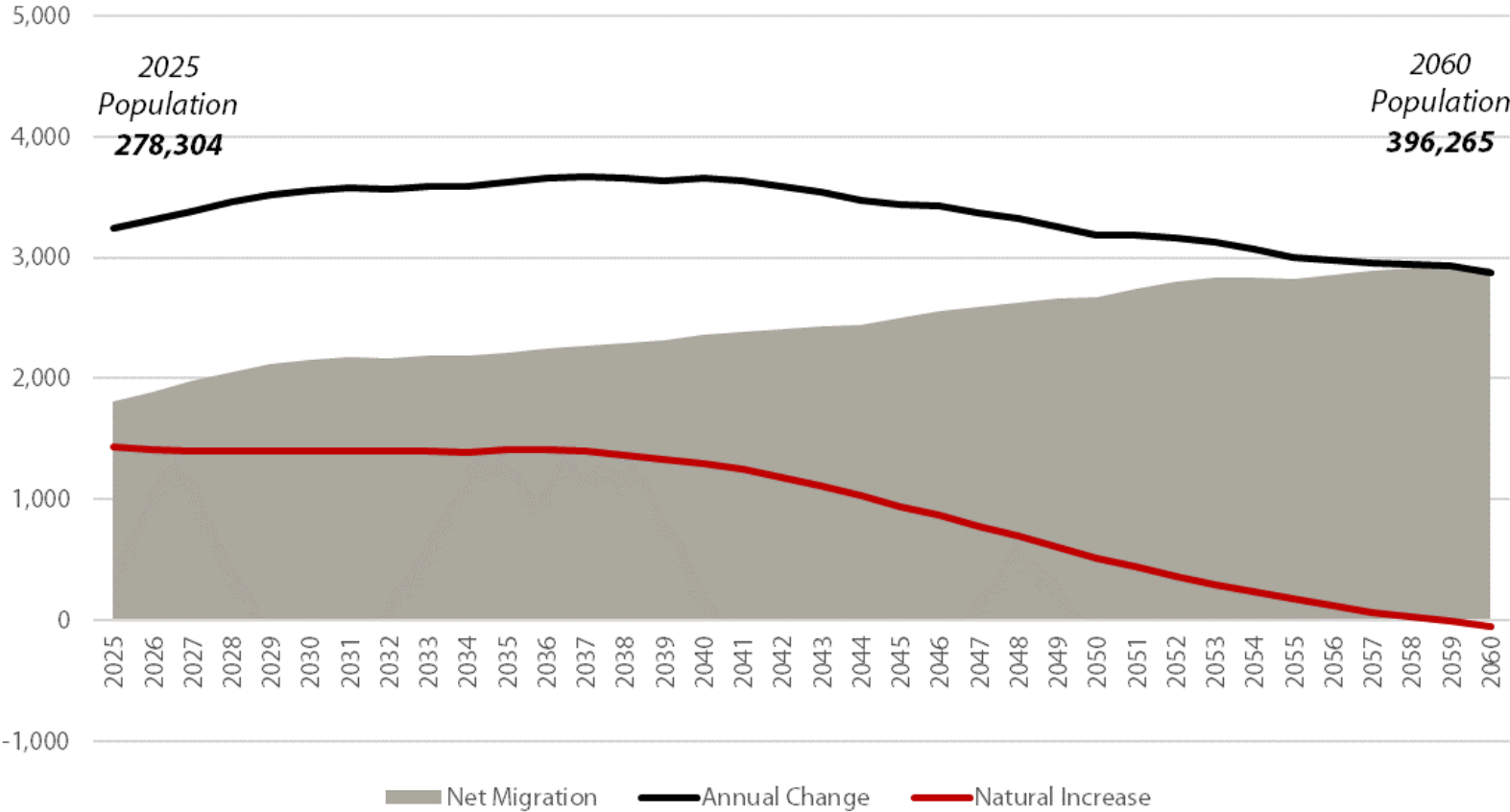


Note: Minority includes all non-Hispanic race groups except non-Hispanic White.

Source: Kem C. Gardner Policy Institute, 2020-2060 Projections

Net migration is projected to be the primary driver of growth throughout the projection period.

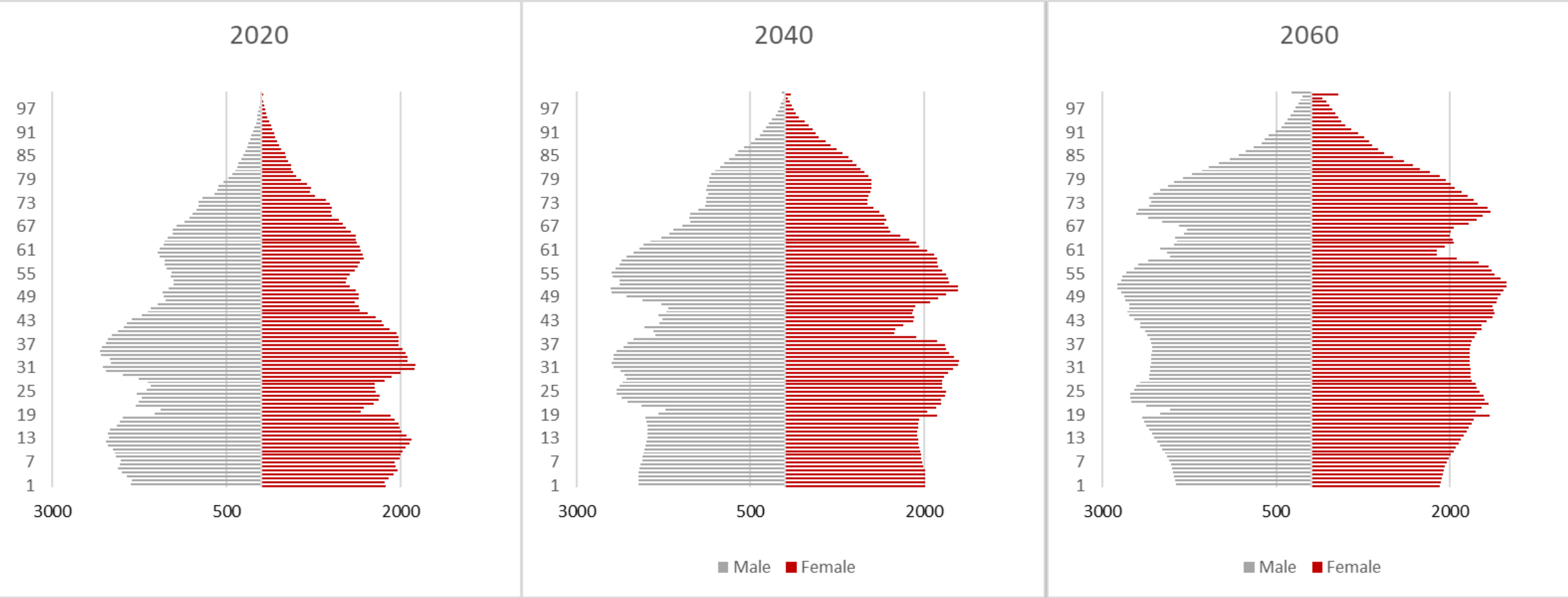
Projected Population Growth with Components of Change in Weber County, 2025-2060



Source: Kem C. Gardner Policy Institute, 2020-2060 Projections

Changes to age structure are different by county

Weber County Population Pyramids, 2020, 2040, 2060

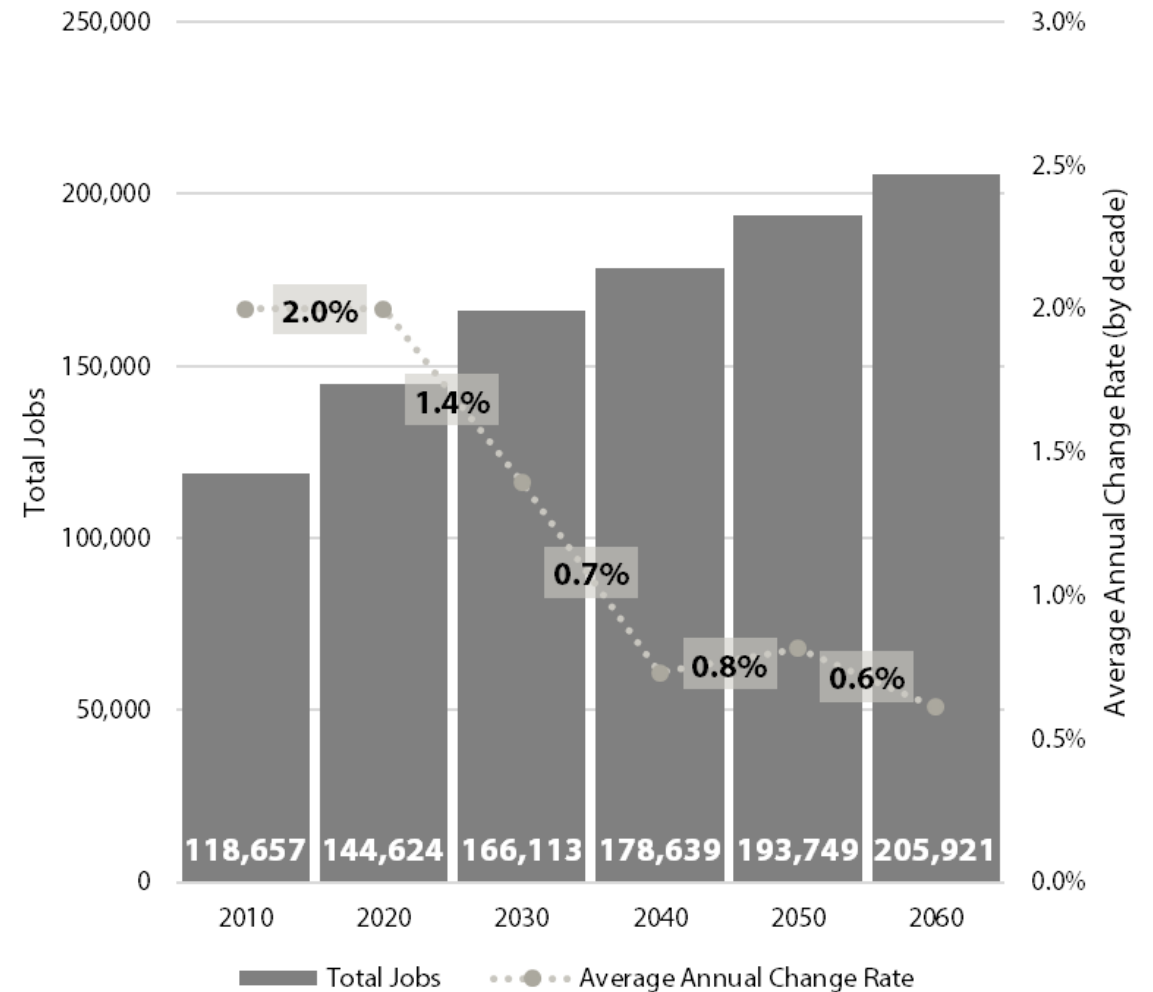


Source: Kem C. Gardner Policy Institute, 2020-2060 Projections

In Weber County, projected increases result in:

Employment increasing from over
148,000 in 2020 to nearly 206,000 in 2060.

Construction, manufacturing,
professional, scientific, and technical services, and
health care and social assistance drive **51% of this
growth.**

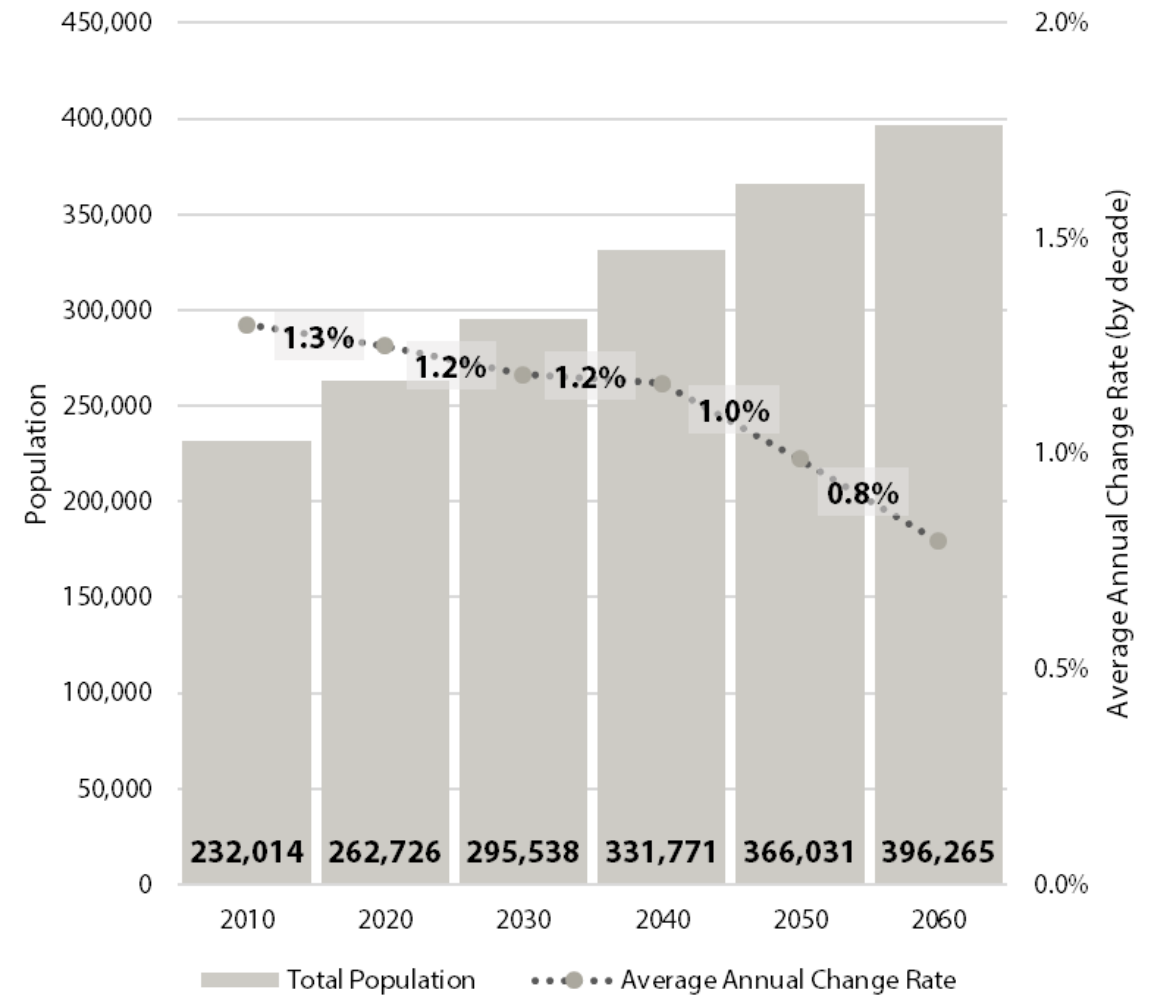


Source: Kem C. Gardner Policy Institute, 2020-2060 Projections

In Weber County, projected increases result in:

An additional 134,000 residents or a 51% increase over 40 years

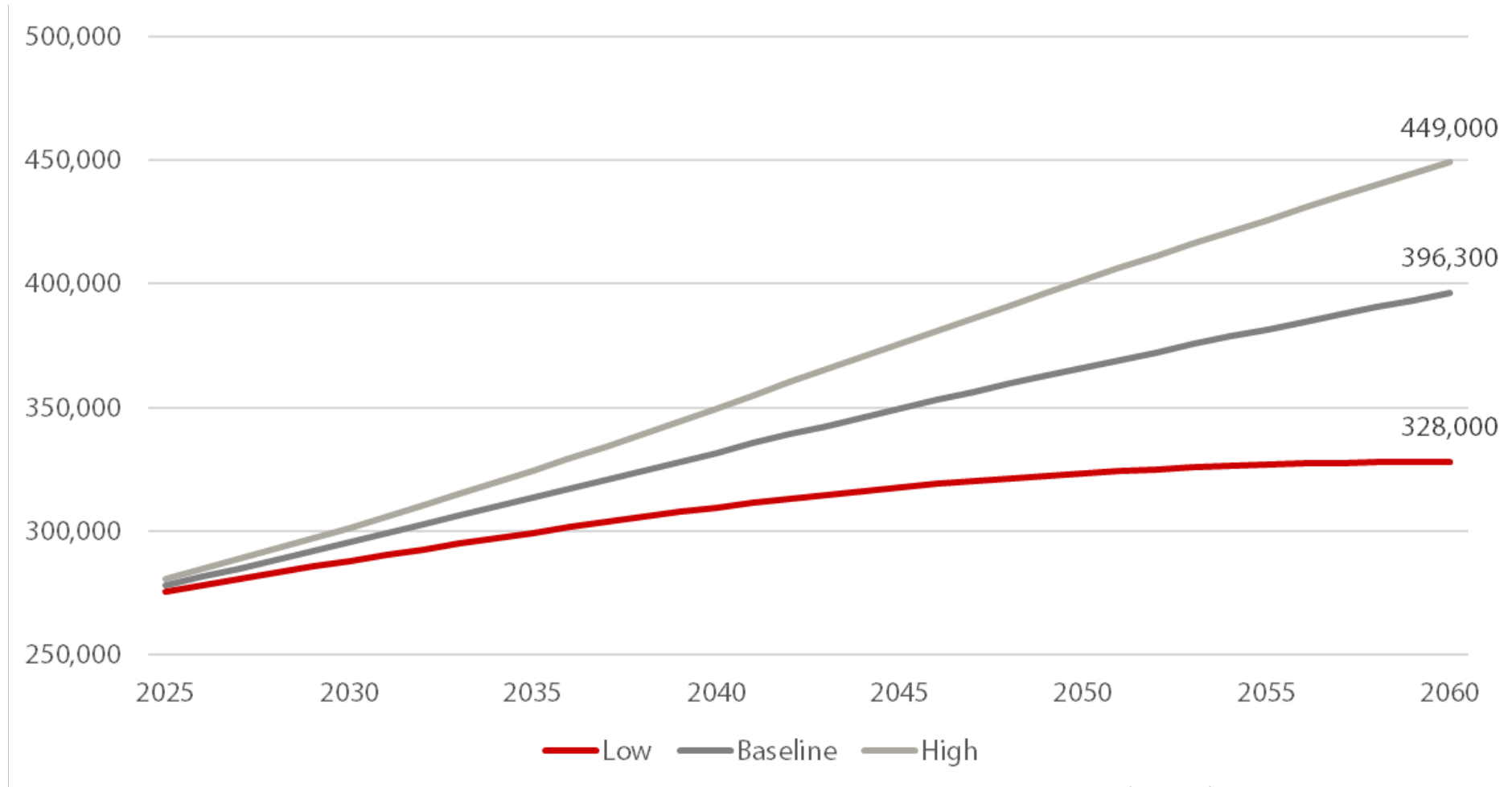
Remaining the **4th largest county** in Utah



Source: Kem C. Gardner Policy Institute, 2020-2060 Projections

If assumptions change, so does the projected future.

Low, Baseline, and High Population Scenarios for Weber County



Source: Kem C. Gardner Policy Institute, 2020-2060 Projection Scenarios

Source links

- Gardner Institute Long-Term Projections (state and county) - <https://gardner.utah.edu/demographics/population-projections/>
- Census Bureau Estimates Releases –
 - Data - <https://www.census.gov/programs-surveys/popest/data/tables.html>
 - State release blog - <https://www.census.gov/library/stories/2021/12/us-population-grew-in-2021-slowest-rate-since-founding-of-the-nation.html>
 - County release blogs - <https://www.census.gov/library/stories/2022/03/deaths-outnumbered-births-in-half-of-states-between-2020-and-2021.html> and <https://www.census.gov/library/stories/2022/03/net-domestic-migration-increased-in-united-states-counties-2021.html>
 - Place release blog - <https://www.census.gov/library/stories/2022/05/population-shifts-in-cities-and-towns-one-year-into-pandemic.html>
- Utah Population Committee Estimates (state and county) - <https://gardner.utah.edu/demographics/state-and-county-level-population-estimates/>